

Medical Safety Information

Pharmaceuticals and Medical Devices Agency

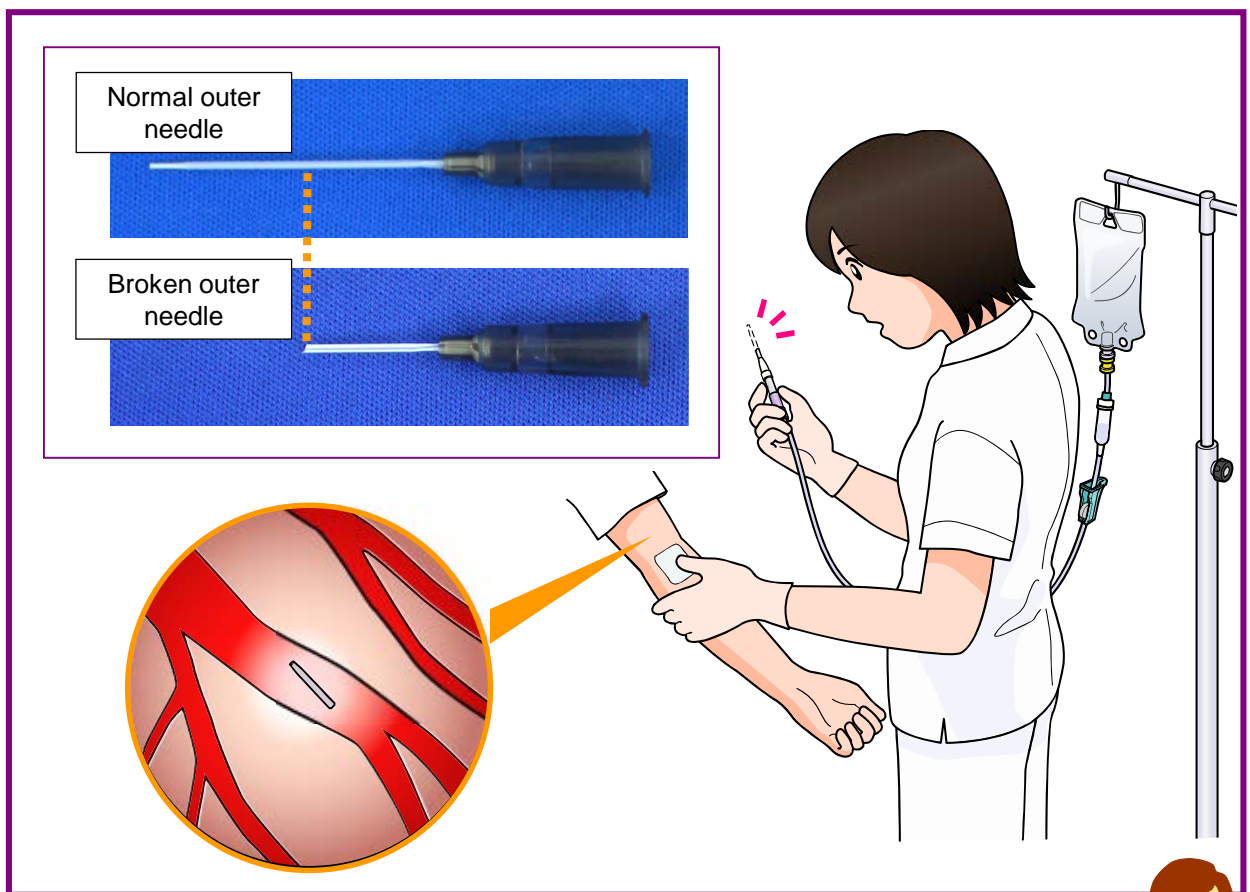
pmda No.45 August 2014

Precautions in Handling of Indwelling Venous Needles

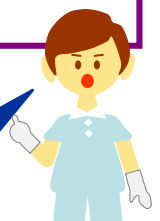
POINT Key points for safe use

(Case) A plastic outer needle broke and remained in the vein when an indwelling venous needle was removed.

1 Precautions during placement of an indwelling venous needle

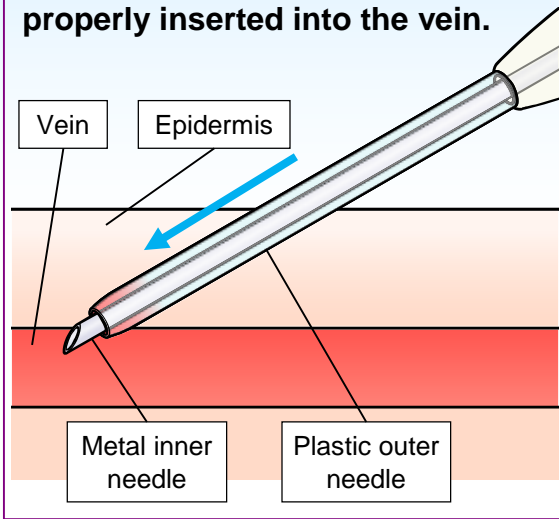


If a plastic outer needle is damaged during insertion, it may break upon **removal**.

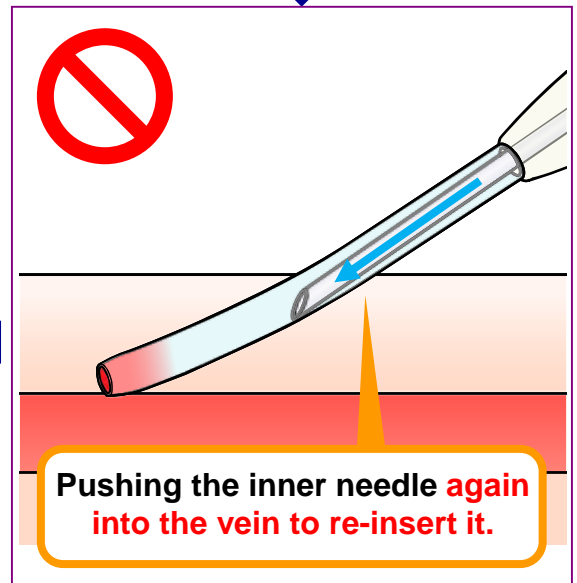
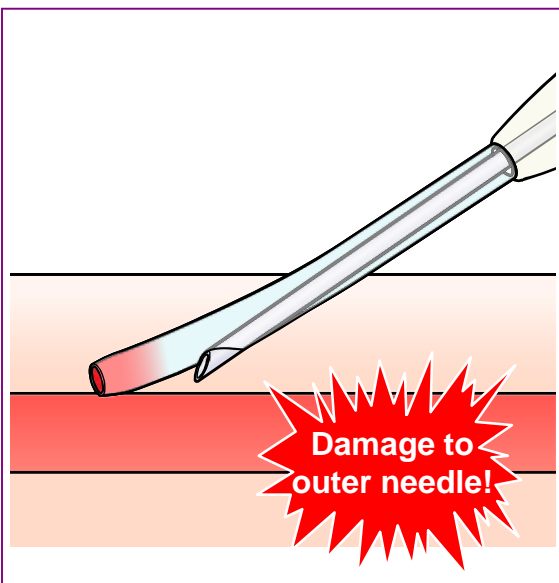
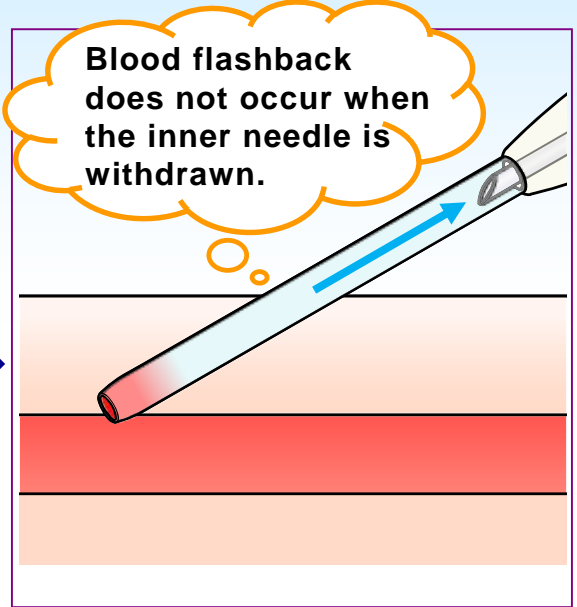


Mechanism of outer needle damage during insertion (example)

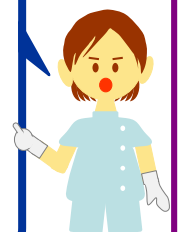
The outer needle is not properly inserted into the vein.



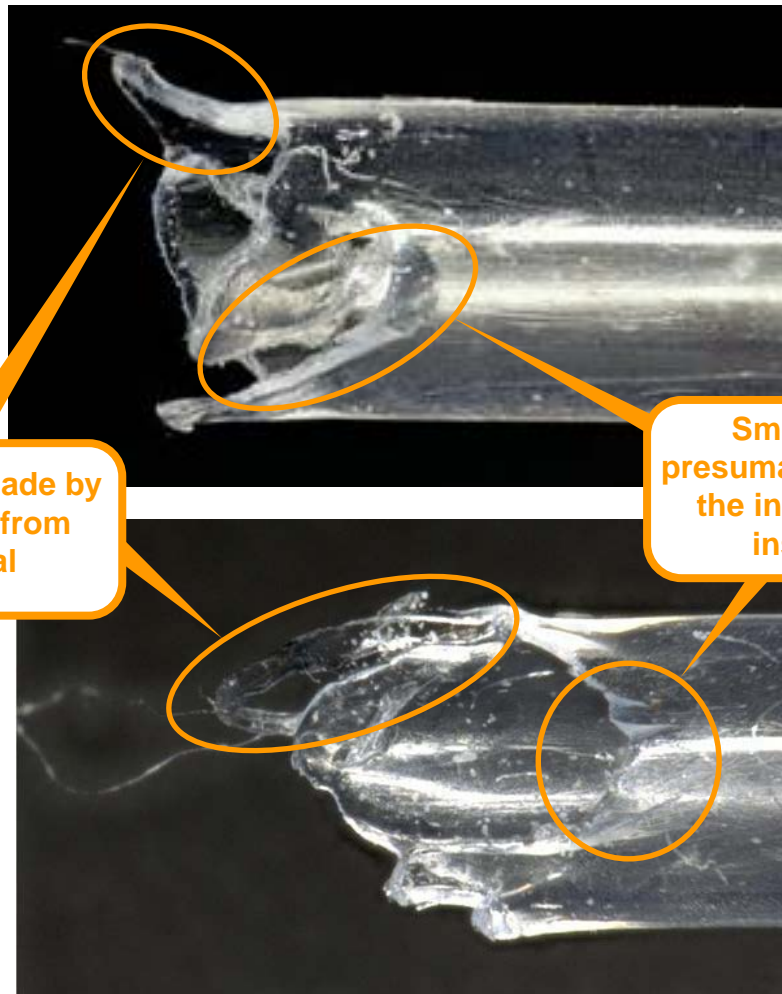
Blood flashback does not occur when the inner needle is withdrawn.



Once the inner needle is withdrawn after insertion, it should not be reinserted to avoid possible damage of the outer needle with the inner needle tip.



Broken indwelling venous needle



A smooth cut made by the metal inner needle tip can be seen on the plastic outer needle as shown in the above photograph. **The plastic outer needle is torn from the damaged area and sheared during removal.**

About this information

- * PMDA Medical Safety Information is issued by the Pharmaceuticals and Medical Devices Agency for the purpose of providing healthcare providers with clearer information from the perspective of promoting the safe use of pharmaceuticals and medical devices. The information presented here has been compiled, with the assistance of expert advice, from cases collected as Medical Accident Information Reports by the Japan Council for Quality Health Care, and collected as Adverse Drug Reaction and Malfunction Reports in accordance with the Pharmaceutical Affairs Law.
- * We have tried to ensure the accuracy of this information at the time of its compilation but do not guarantee its accuracy in the future.
- * This information is not intended to impose constraints on the discretion of healthcare professionals or to impose obligations and responsibility on them, but is provided as a support to promote the safe use of pharmaceuticals and medical devices by healthcare professionals.